

Transducer Family

C5-1XQ	C5-2XQ	L12-4HQ	L30-8XQ
			
Curved Array	Curved Array	High Element Linear Array	High Frequency Linear Array
P5-1Q	C6-1MQ	E10-3HQ	E10-3MQ
			
Phased Array	3D/4D Mechanical Curved Array	Endocavity Curved Array(200°)	3D/4D Endocavity Curved Array
ECL 12-3Q	P7-3MQ		
			
Endocavity Biplane	TEE Phased Array		

Empowering Definitive Diagnosis

Acclarix™ LX85 Diagnostic Ultrasound System



Elegant Fusion of Specialty and Flexibility

When referring to performance, renovation and multiformity - there is one ultrasound system that delivers more. Developed specifically to address the challenges of complex ultrasound environments, the Acclarix LX85 Diagnostic Ultrasound System aims to provide precise diagnosis in versatile clinic application with uncompromising image quality, brilliant workflow and user-friendly operation.

- 21.5 inch high resolution LCD medical monitor
- 14 inch sensitive touch screen releasing efficient operation at fingertip
- Integrated user interface with 180° rotation and electronic height adjustment
- Extra-long continuous scanning time owing to two built-in batteries



Distinctive Design

21.5 inch
high resolution
LED monitor



14 inch sensitive
touch screen



20cm
electric lifting



Backlit hidden
keyboard



Flexible "Z" arm



180° rotatable
control panel



5 activated
transducer
sockets



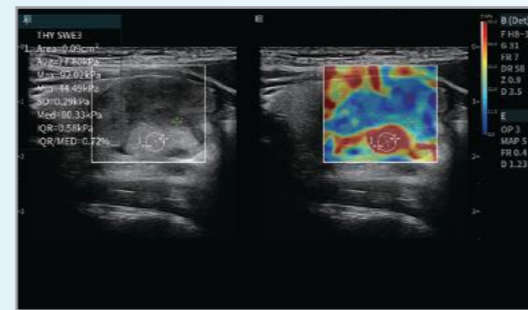
Definitive Image Quality



Fetal 3D



Fetal Spine



Shear Wave Elastography



Kidney with MFI



Liver



Long axis of the left ventricle



Uterus



Breast cyst

SynSight

Synthetic Focused Sonography Platform

EDAN SynSight Technology can utilize all of the information contained in the returning echo data set acquired in each large zone and, as such, can cover the field of view in fewer transmit/receive cycles.

The original raw echo information is retrospectively reprocessed multiple times in the channel domain processor to form optimal images.



Spatial Resolution



Imaging Resolution



Contrast Resolution

Energy efficiency improves 28x

Dynamic Pixel Focusing

Consistent image quality across the entire field of view without frequent focal adjustments.



Traditional focusing



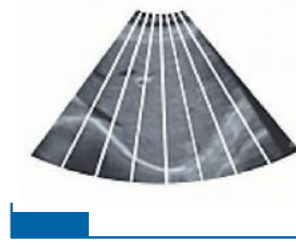
SynSight Zone focusing

Advanced Acoustic Acquisition

Uses a reduced number of larger zones for transmission and reception, extracting more data at 10x the speed of traditional line-by-line beamforming.



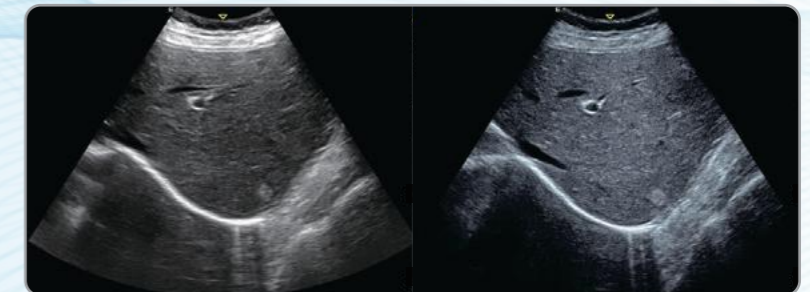
Traditional imaging speed



SynSight Zone imaging speed

Excellent Image Uniformity

Based on maximizing the storage of raw data, it delivers highly uniform ultrasound images while ensuring detail resolution and contrast resolution.



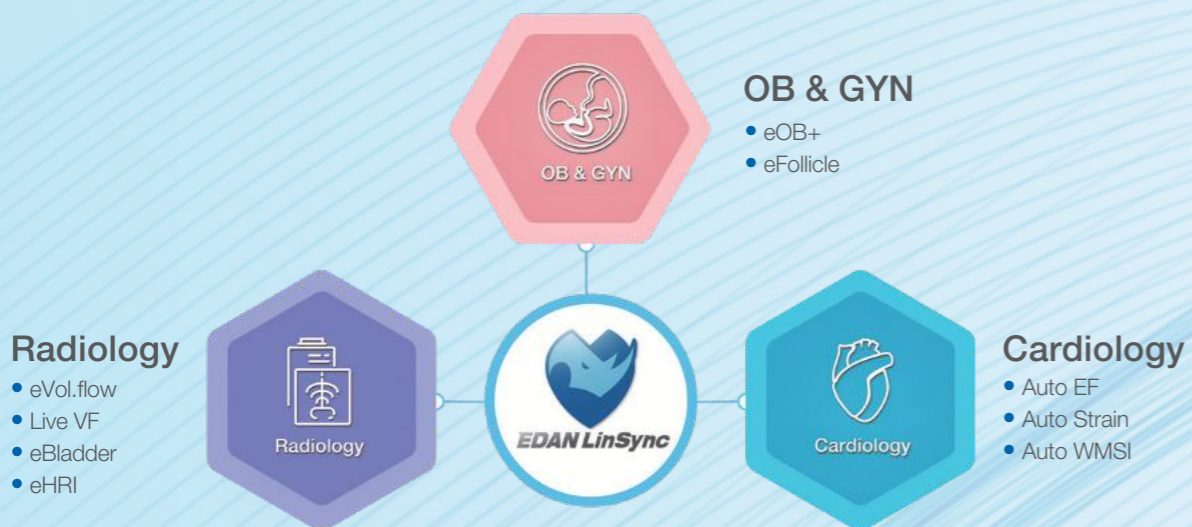
Traditional imaging platform

SynSight Zone imaging platform

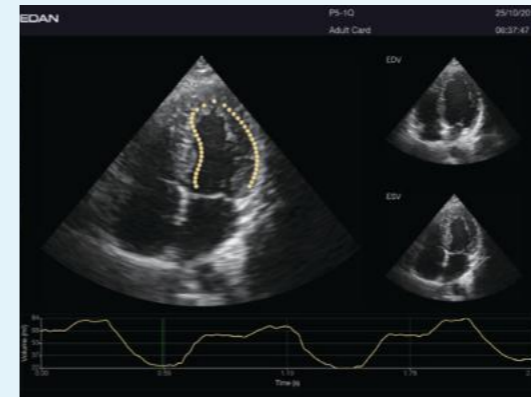
LinSync Smart Solution



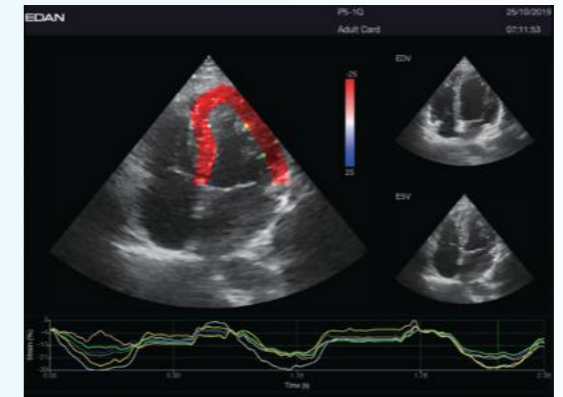
The Acclarix LX85 features advanced artificial intelligent technologies, integrated with mighty hardware platform, delivers unexpected value and performance across a broad range of applications:



Link to your heart, Sync with your mind; EDAN LinSync serve you all around.



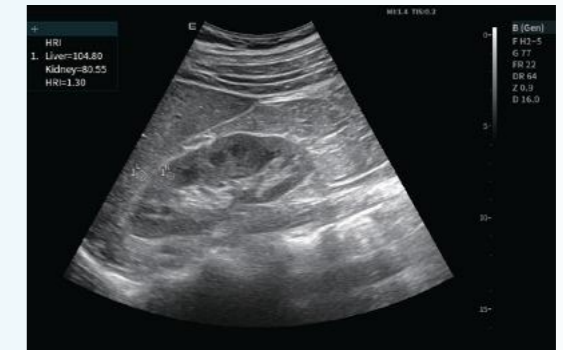
eLV Auto EF



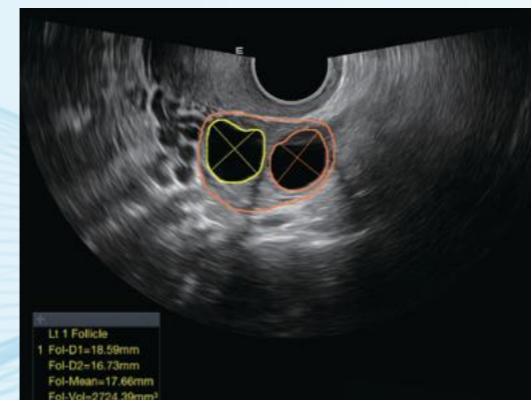
eLV Auto SG & Strain



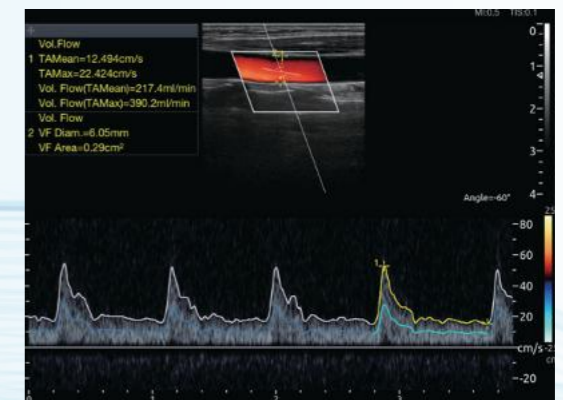
eOB+



eHRI



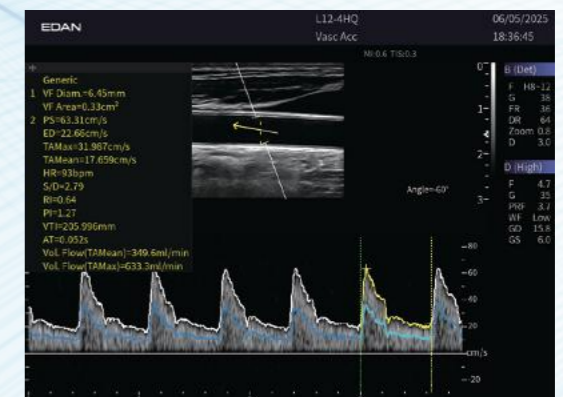
eFollicle



eVol.Flow



eBladder



Live VF